

PRODUCT BULLETIN

7 March 2019

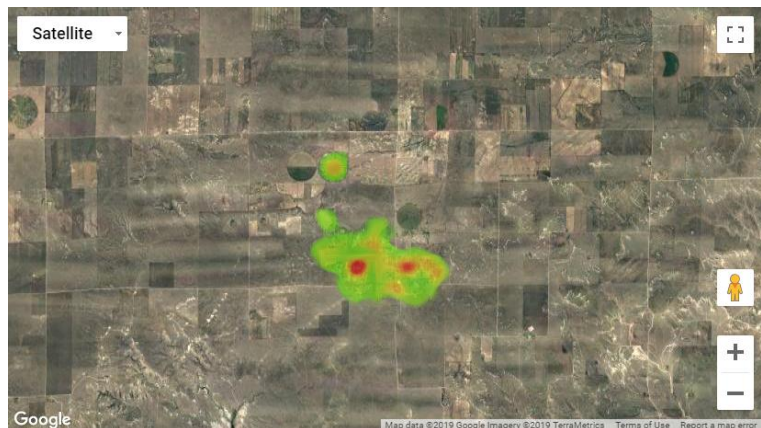
Issue 19-03.2

Introducing iNet[®] Now Heat Maps

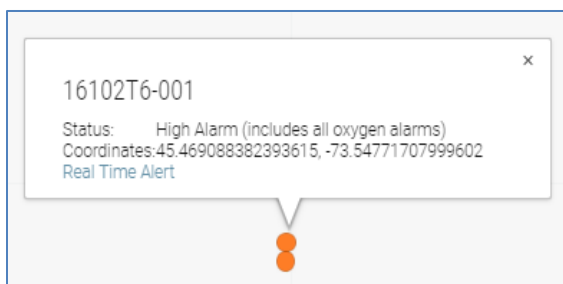
Industrial Scientific is pleased to introduce Heat Map functionality within iNet[®] Now. The enhanced views within Heat Maps take iNet Now Live Monitoring to the next level with the actionable data needed to keep workers safe. Heat Maps allow iNet Now users to get an instant, visual summary of areas in which alarm events have occurred. This feature allows users to investigate worksite hazards and plan accordingly for maintenance, operations, and risk mitigation. Heat Maps are available to all iNet Now users directly from the Real Time Alerts grid.

Heat Map Display Options

iNet Now users can set Heat Maps to display alarms in either map or satellite view. The ability to see a broad location range enables those monitoring to view alarms associated with lone workers in remote locations as well as those in plant for a holistic view of alarm activity across operations. In the high-level satellite or street views, the color gradient represents the intensity of alarm activity. Users can also observe alarms from a building-specific view to help pinpoint alarm location.



Grid Filters and Alarm Cards

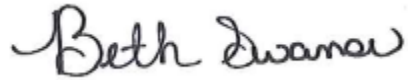


To view specific alarms shown on the Heat Map, users can apply filters to the grid view. By applying filters including Alarm Type, Equipment Code, and Date Occurred, users can focus on critical information to better understand areas with current elevated risk. When zoomed in on the Heat Map, each tracked gas detector or worker in alarm status is represented by an orange marker. Users can view more detail within a

marker on a Heat Map including location and worker information (if assigned to the instrument) so they can take action to resolve the alarm situation.

Heat Maps are available for all iNet Now users. For additional information on iNet Now Live Monitoring, including Heat Maps, visit our website at www.indsci.com or contact your local Industrial Scientific representative. Global contact information can be found at www.indsci.com/offices.

Sincerely,



Beth Swanson
Product Manager, iNet